



Draw the hour and minute hand on the clock so it represents the time shown.

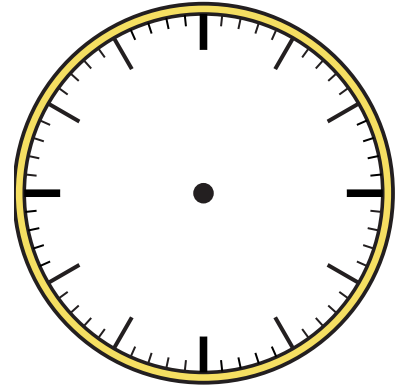
1) 6:15



2) 5:05



3) 1:45



4) 4:00



5) 11:05



6) 6:10



7) 10:40



8) 10:00



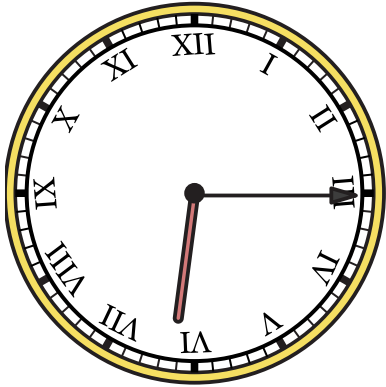
9) 4:30



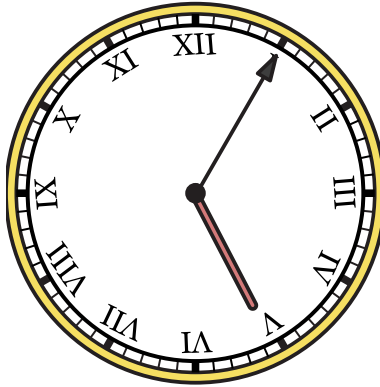


Draw the hour and minute hand on the clock so it represents the time shown.

1) 6:15



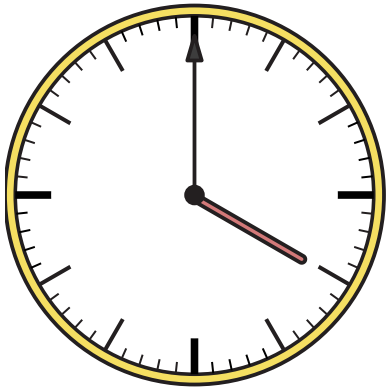
2) 5:05



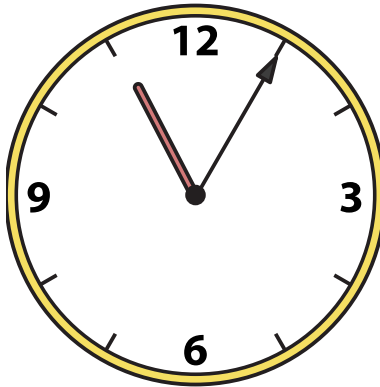
3) 1:45



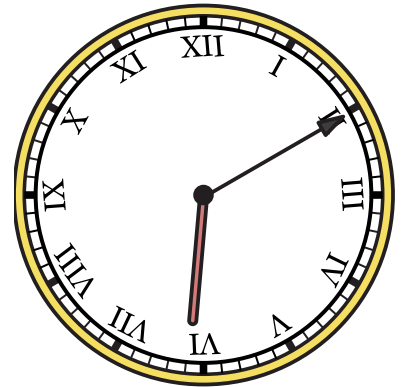
4) 4:00



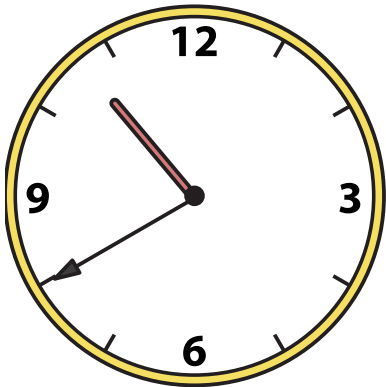
5) 11:05



6) 6:10



7) 10:40



8) 10:00



9) 4:30

