



Draw the hour and minute hand on the clock so it represents the time shown.

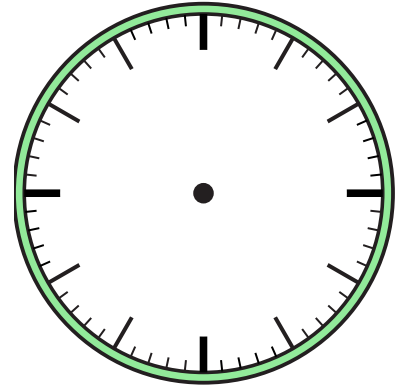
1) 1:30



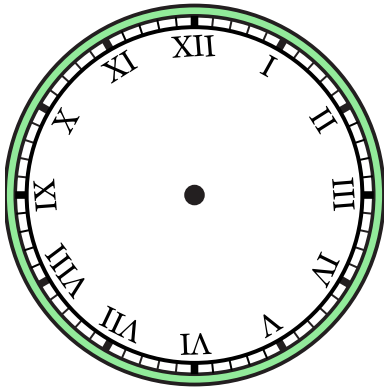
2) 11:00



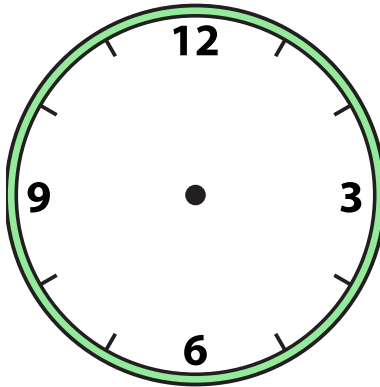
3) 5:30



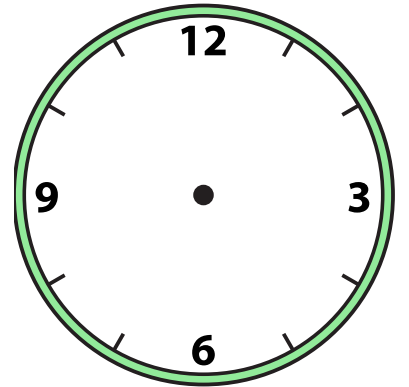
4) 10:00



5) 3:00



6) 5:00



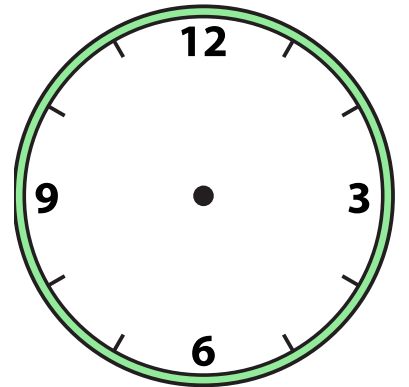
7) 3:30



8) 11:30



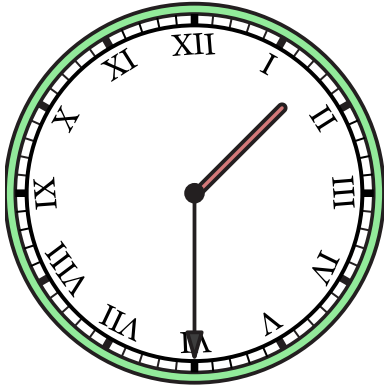
9) 12:30



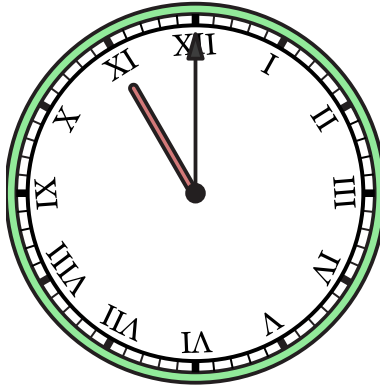


Draw the hour and minute hand on the clock so it represents the time shown.

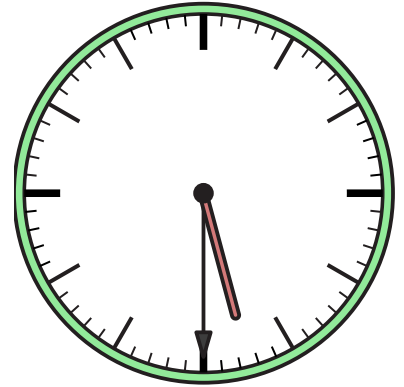
1) 1:30



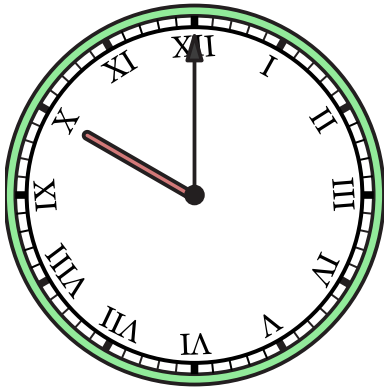
2) 11:00



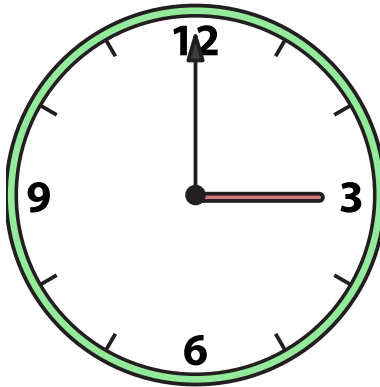
3) 5:30



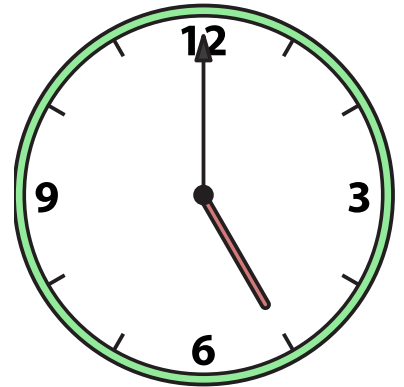
4) 10:00



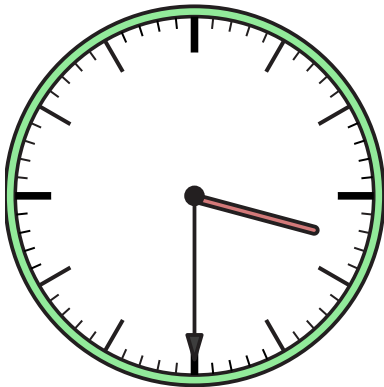
5) 3:00



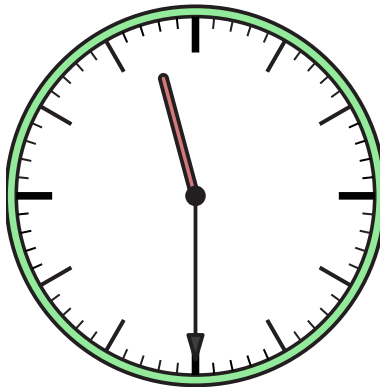
6) 5:00



7) 3:30



8) 11:30



9) 12:30

