

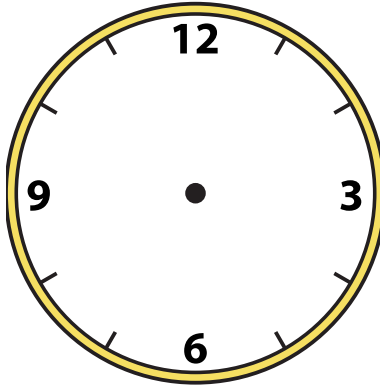


Draw the hour and minute hand on the clock so it represents the time shown.

1) 12:00



2) 9:15



3) 8:00



4) 2:00



5) 10:15



6) 4:30



7) 5:30



8) 11:30



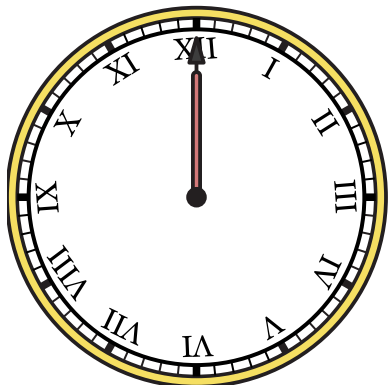
9) 9:45





Draw the hour and minute hand on the clock so it represents the time shown.

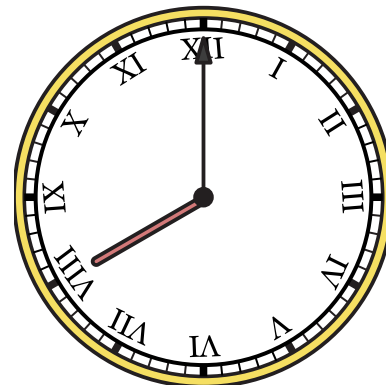
1) 12:00



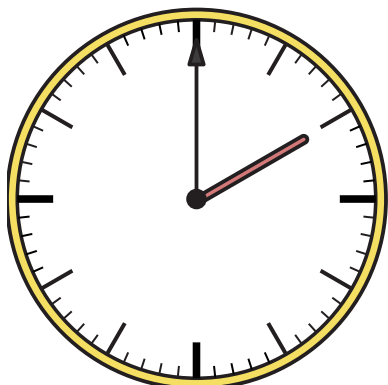
2) 9:15



3) 8:00



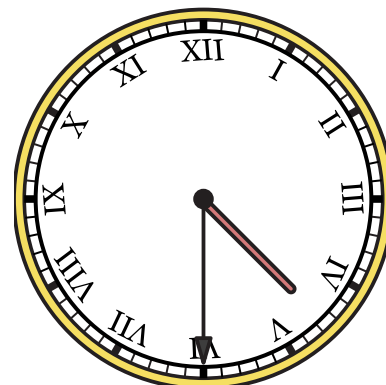
4) 2:00



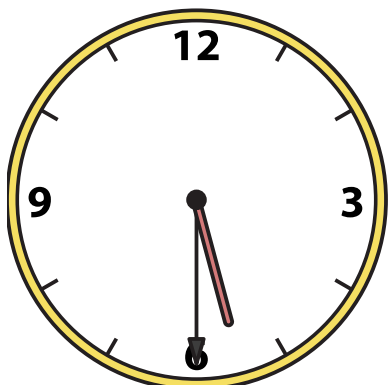
5) 10:15



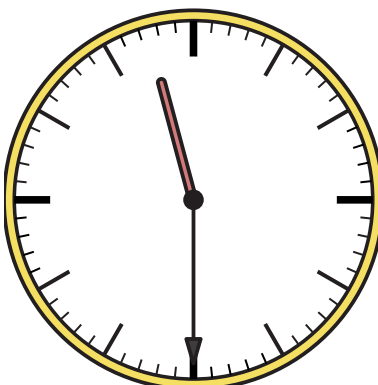
6) 4:30



7) 5:30



8) 11:30



9) 9:45

