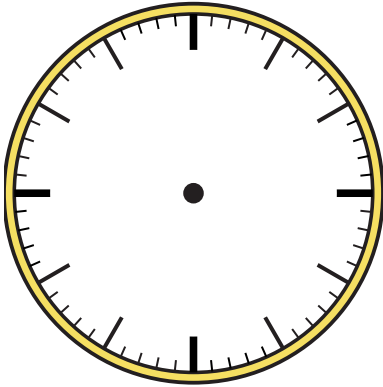




Draw the hour and minute hand on the clock so it represents the time shown.

1) 6:45



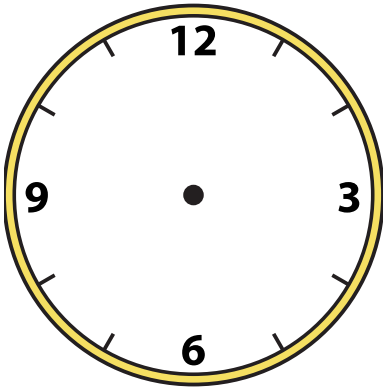
2) 11:30



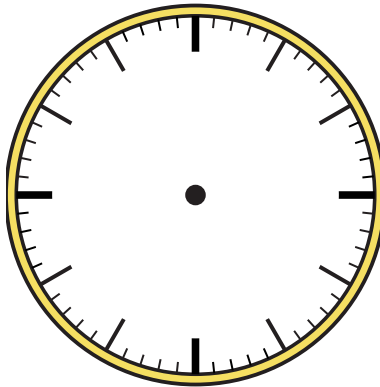
3) 12:00



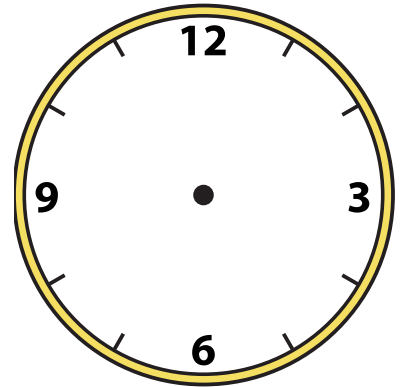
4) 9:45



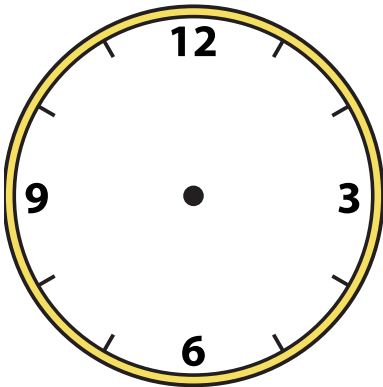
5) 12:00



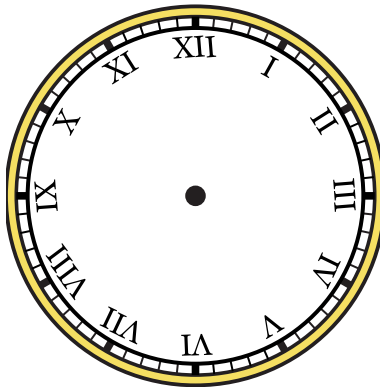
6) 1:45



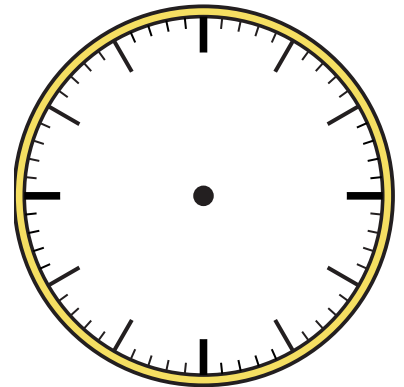
7) 10:15

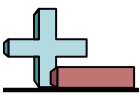


8) 3:15



9) 11:15



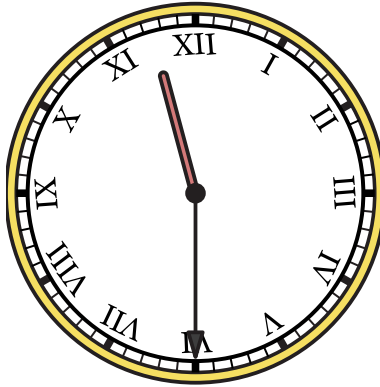


Draw the hour and minute hand on the clock so it represents the time shown.

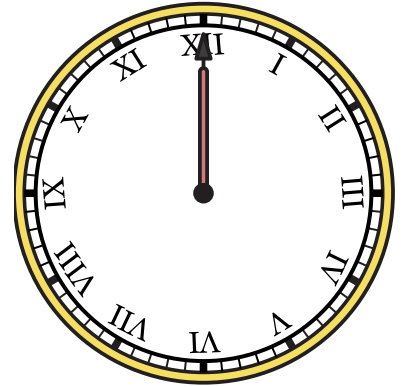
1) 6:45



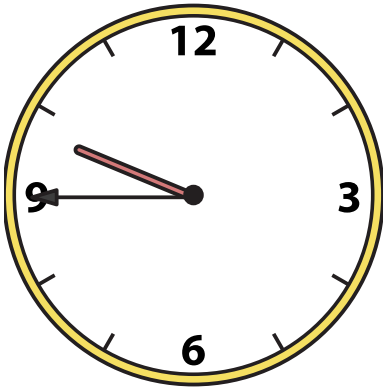
2) 11:30



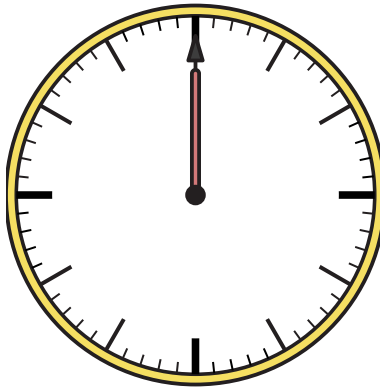
3) 12:00



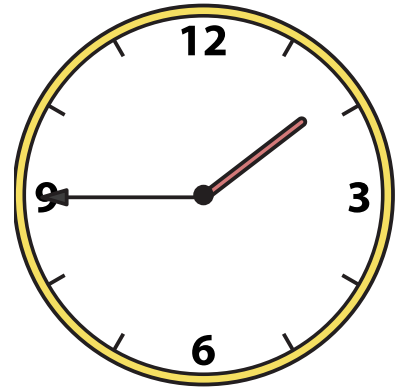
4) 9:45



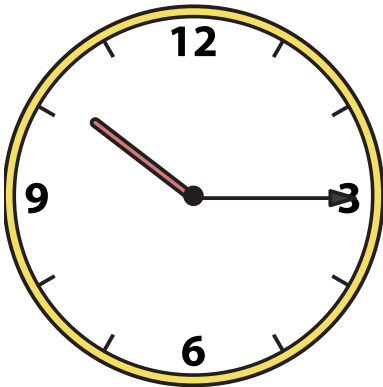
5) 12:00



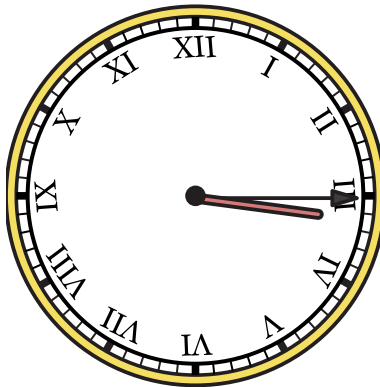
6) 1:45



7) 10:15



8) 3:15



9) 11:15

