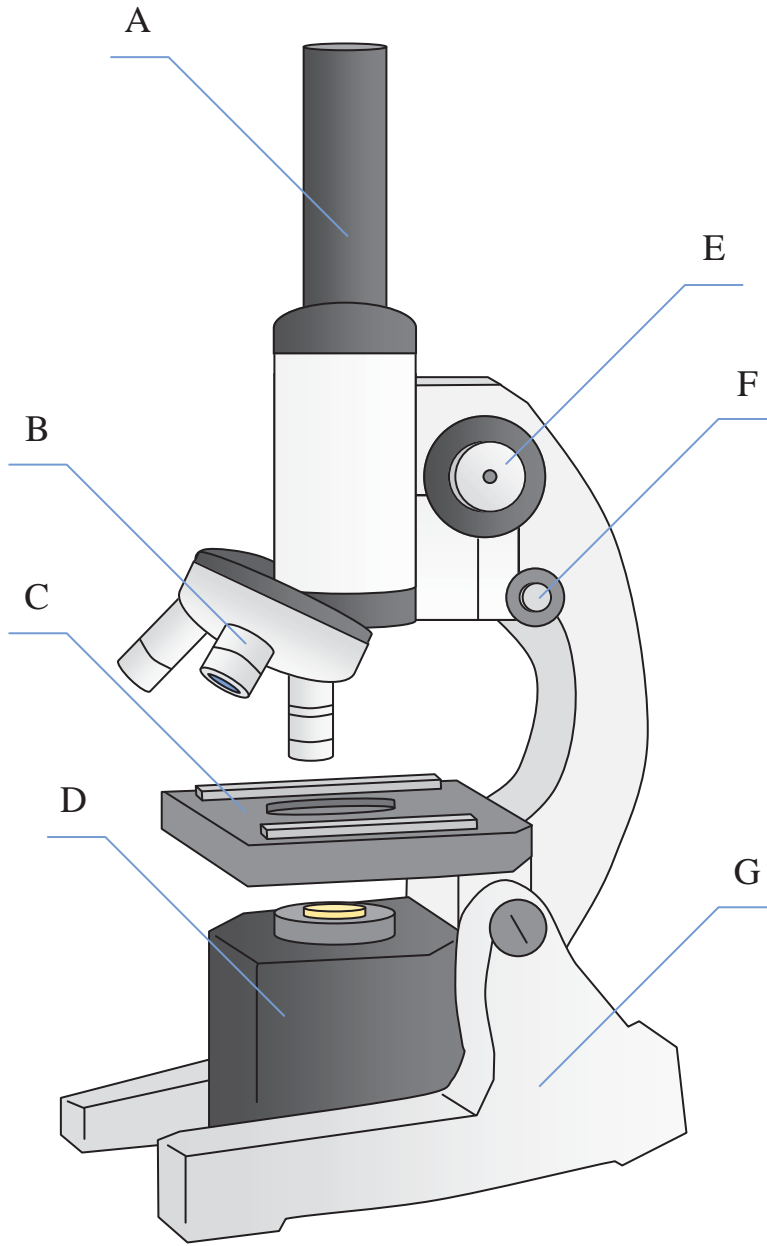




Determine which letter best matches each microscope piece.



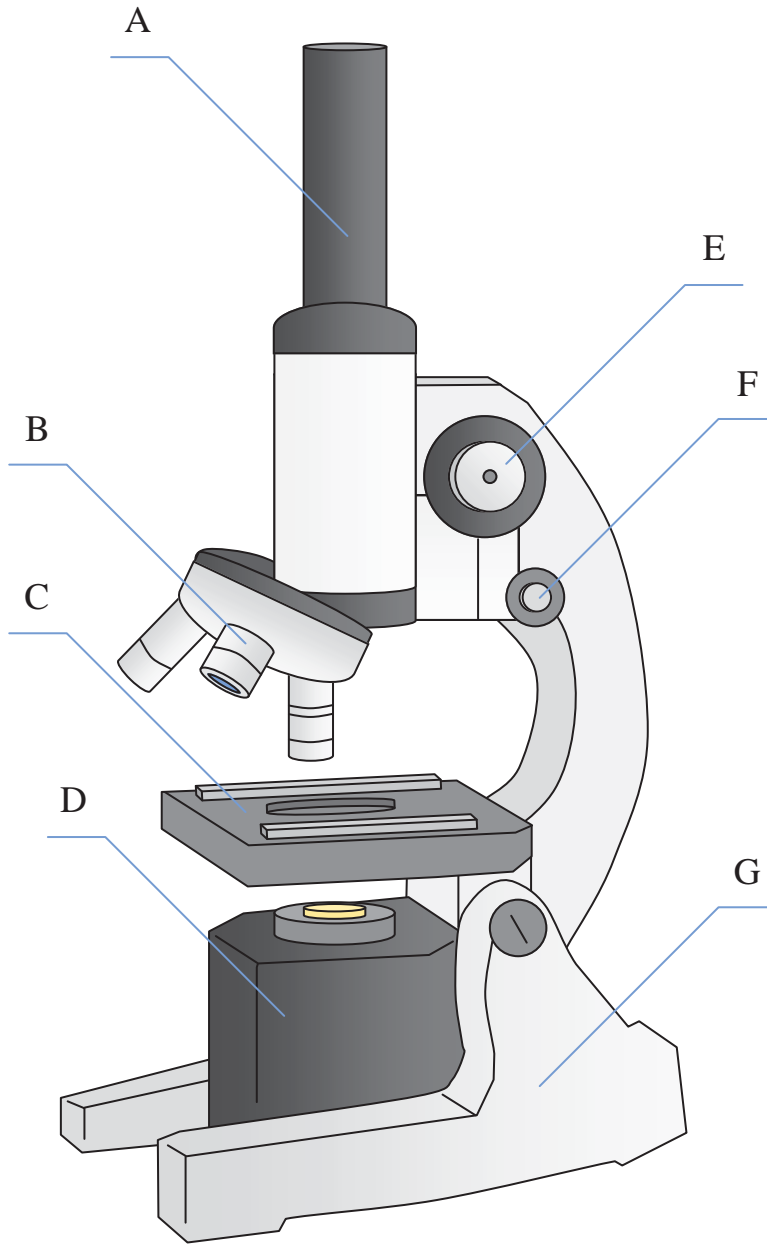
Answers

1. _____
2. _____
3. _____
4. _____
5. _____
6. _____
7. _____

- 1) Illuminator _____
- 2) Stage _____
- 3) Eyepiece _____
- 4) Focus (Fine) _____
- 5) Lense _____
- 6) Focus (Course) _____
- 7) Base _____



Determine which letter best matches each microscope piece.



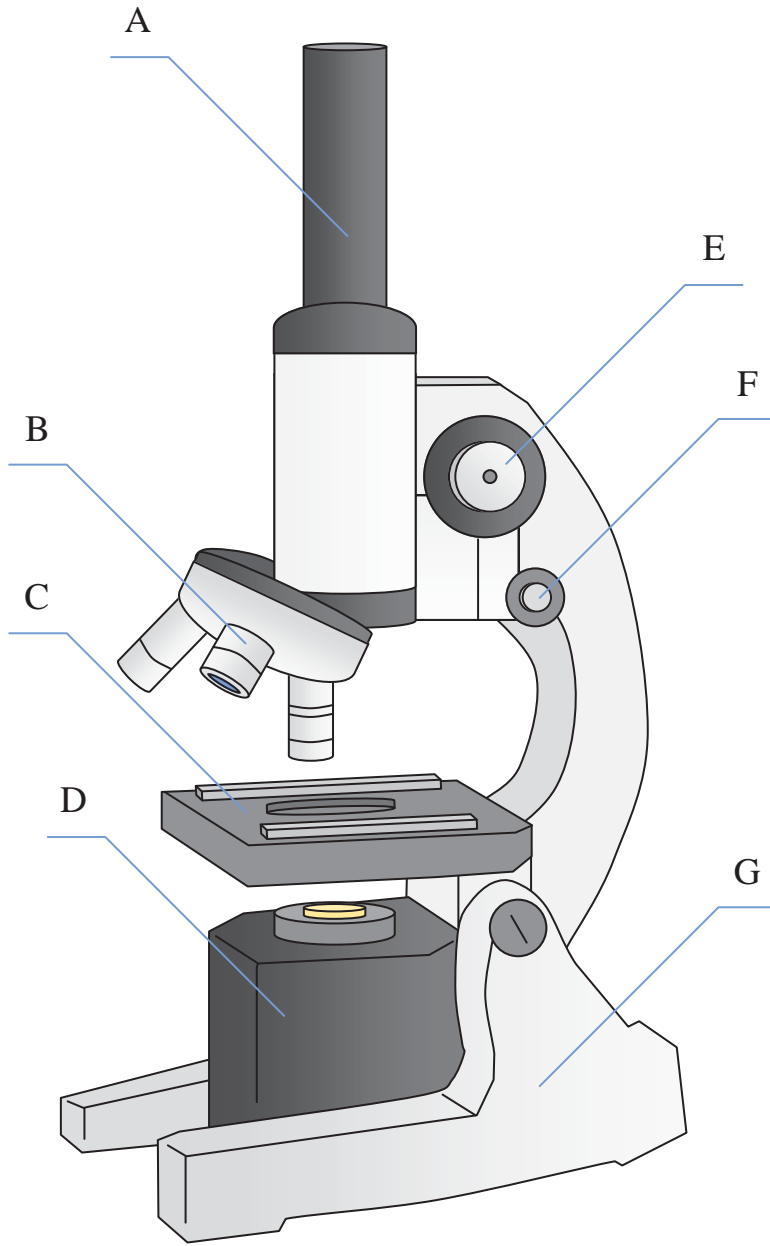
- 1) Illuminator _____
- 2) Stage _____
- 3) Eyepiece _____
- 4) Focus (Fine) _____
- 5) Lense _____
- 6) Focus (Course) _____
- 7) Base _____

Answers

- 1. **D**
- 2. **C**
- 3. **A**
- 4. **F**
- 5. **B**
- 6. **E**
- 7. **G**



Determine which letter best matches each microscope piece.



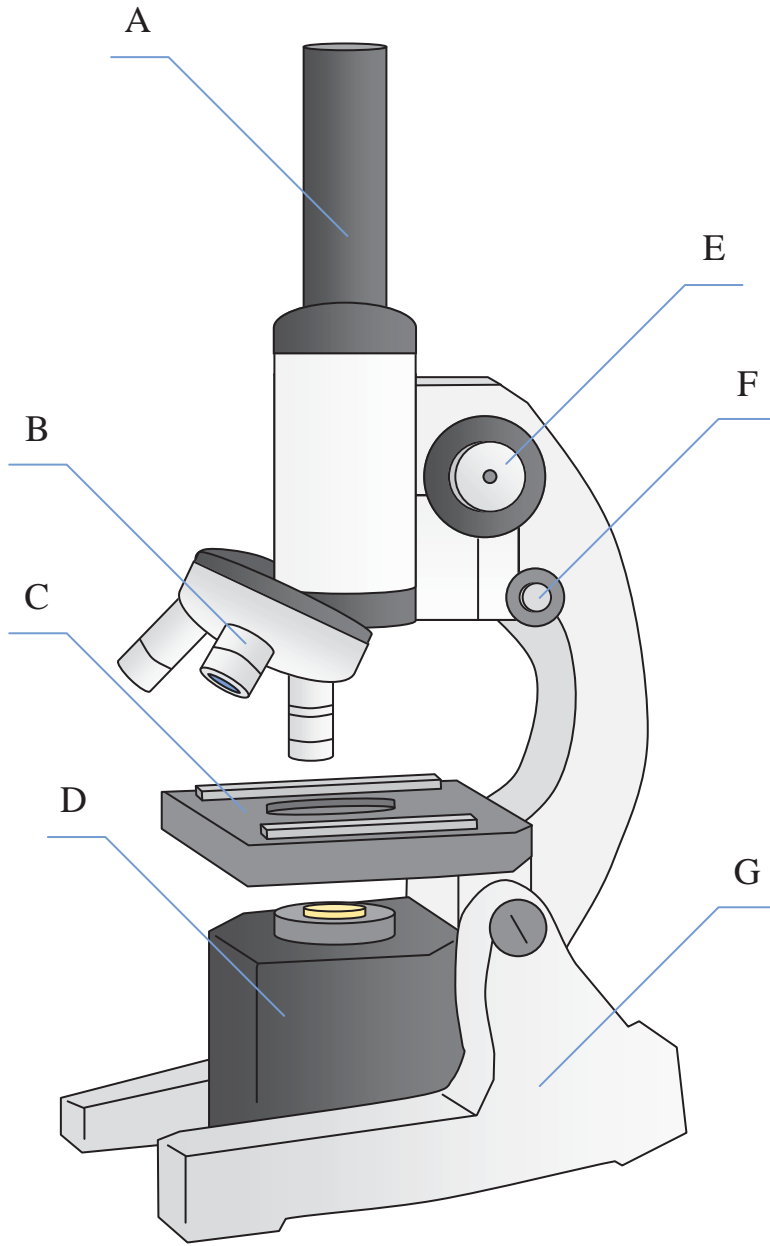
Answers

1. _____
2. _____
3. _____
4. _____
5. _____
6. _____
7. _____

- 1) Base _____
- 2) Focus (Fine) _____
- 3) Lense _____
- 4) Stage _____
- 5) Eyepiece _____
- 6) Illuminator _____
- 7) Focus (Course) _____



Determine which letter best matches each microscope piece.



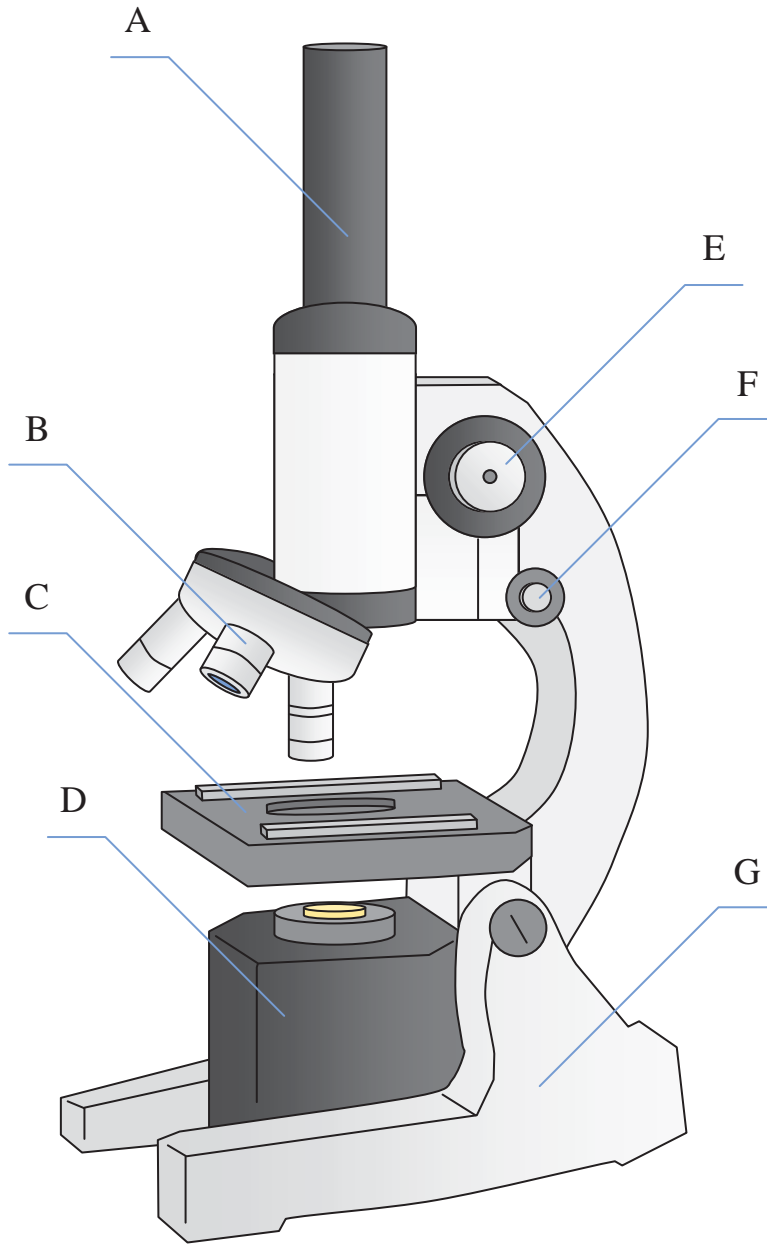
- 1) Base _____
- 2) Focus (Fine) _____
- 3) Lense _____
- 4) Stage _____
- 5) Eyepiece _____
- 6) Illuminator _____
- 7) Focus (Course) _____

Answers

- 1. **G**
- 2. **F**
- 3. **B**
- 4. **C**
- 5. **A**
- 6. **D**
- 7. **E**



Determine which letter best matches each microscope piece.



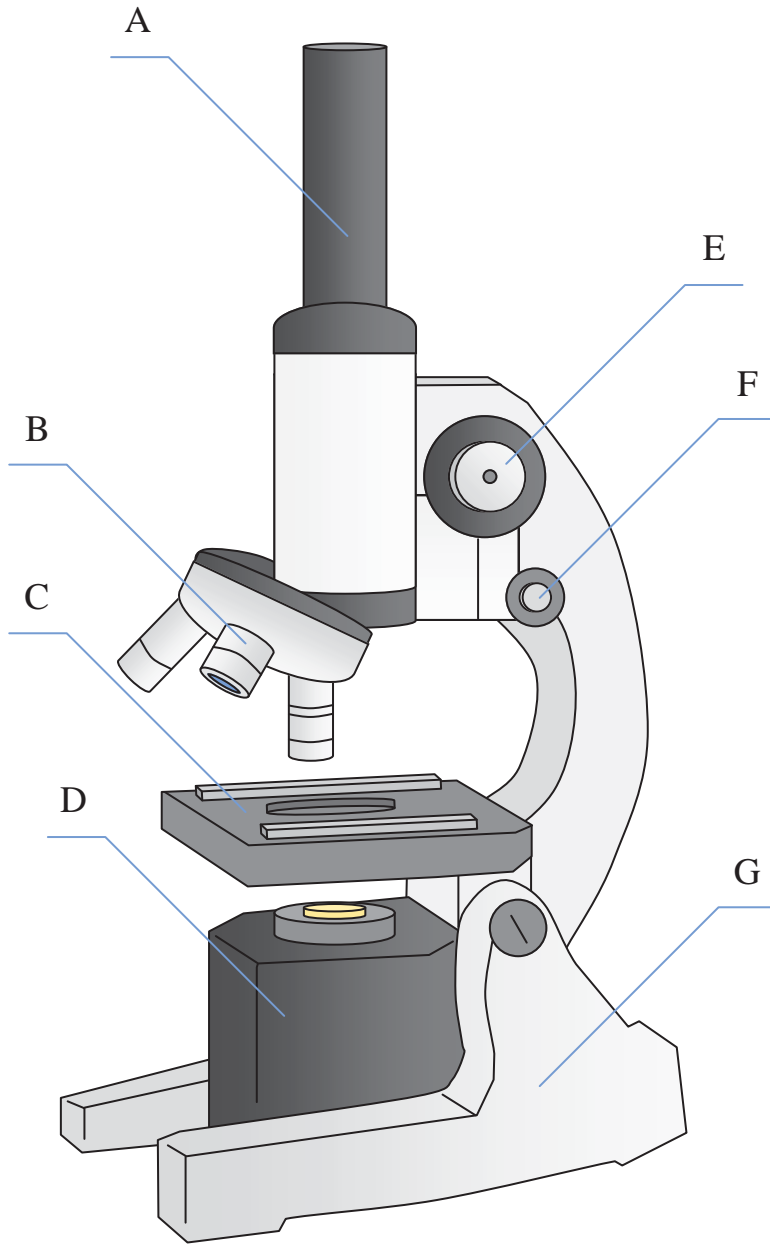
Answers

1. _____
2. _____
3. _____
4. _____
5. _____
6. _____
7. _____

- 1) Stage _____
- 2) Base _____
- 3) Lense _____
- 4) Illuminator _____
- 5) Focus (Fine) _____
- 6) Eyepiece _____
- 7) Focus (Course) _____



Determine which letter best matches each microscope piece.



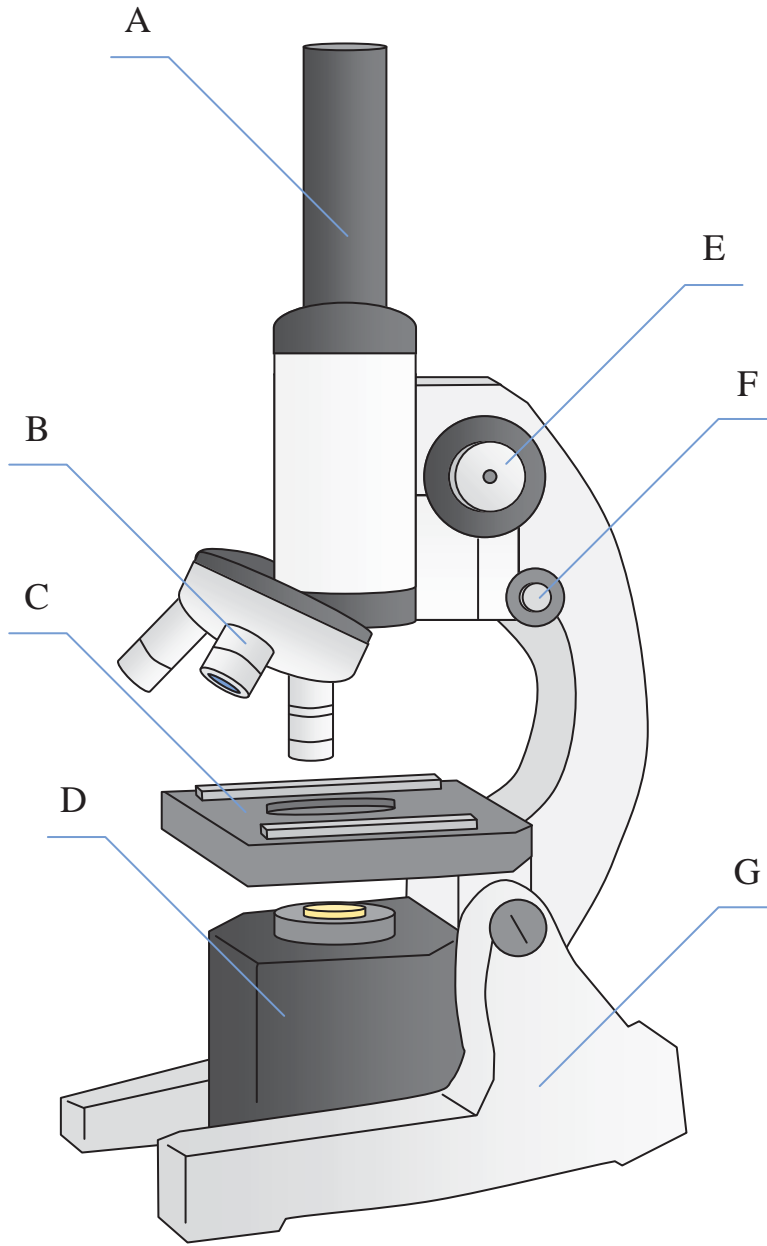
Answers

- 1. **C**
- 2. **G**
- 3. **B**
- 4. **D**
- 5. **F**
- 6. **A**
- 7. **E**

- 1) Stage _____
- 2) Base _____
- 3) Lense _____
- 4) Illuminator _____
- 5) Focus (Fine) _____
- 6) Eyepiece _____
- 7) Focus (Course) _____



Determine which letter best matches each microscope piece.



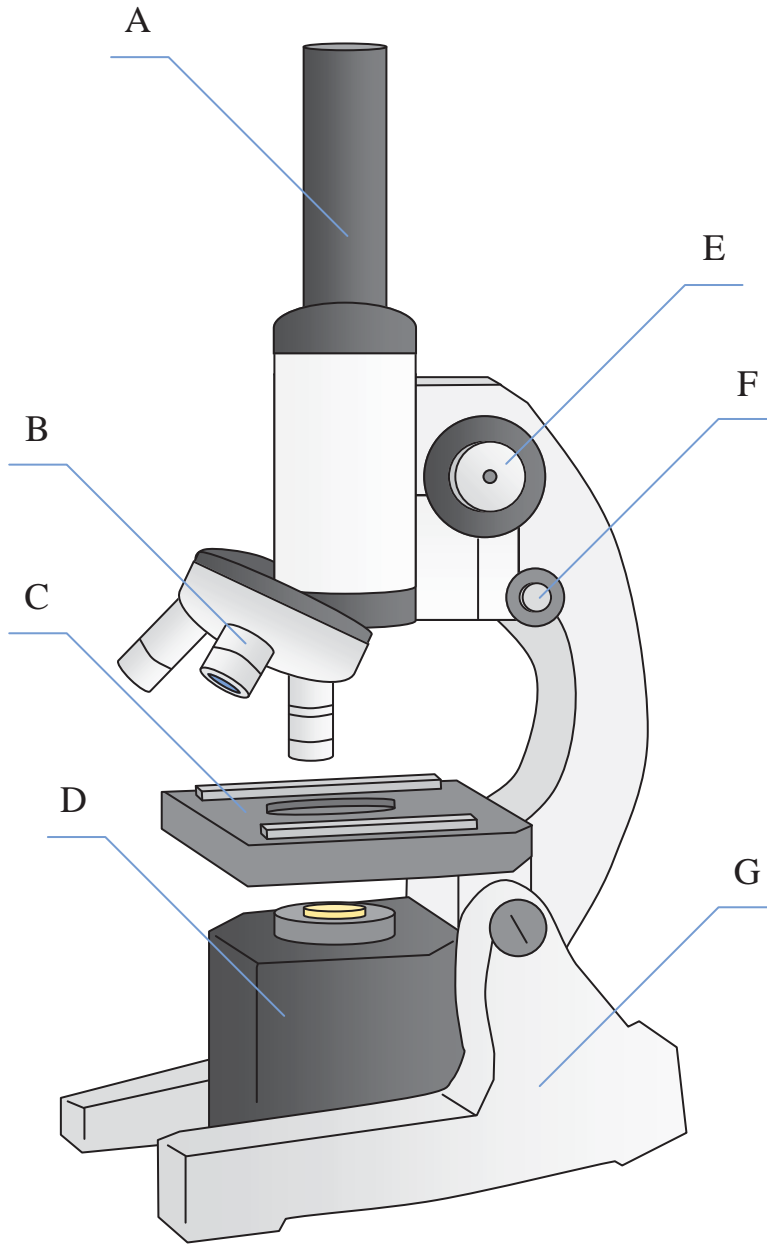
Answers

1. _____
2. _____
3. _____
4. _____
5. _____
6. _____
7. _____

- 1) Base _____
- 2) Eyepiece _____
- 3) Focus (Fine) _____
- 4) Illuminator _____
- 5) Lense _____
- 6) Stage _____
- 7) Focus (Course) _____



Determine which letter best matches each microscope piece.



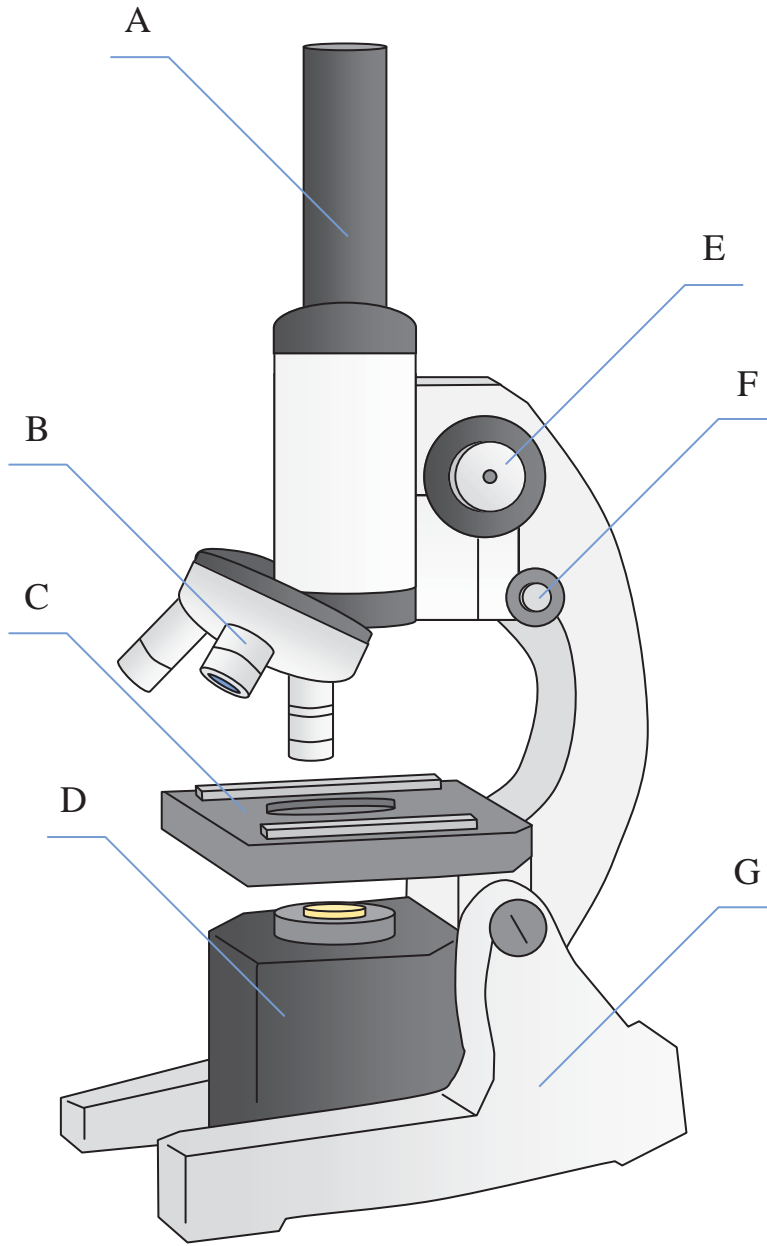
- 1) Base _____
- 2) Eyepiece _____
- 3) Focus (Fine) _____
- 4) Illuminator _____
- 5) Lense _____
- 6) Stage _____
- 7) Focus (Course) _____

Answers

- 1. **G**
- 2. **A**
- 3. **F**
- 4. **D**
- 5. **B**
- 6. **C**
- 7. **E**



Determine which letter best matches each microscope piece.



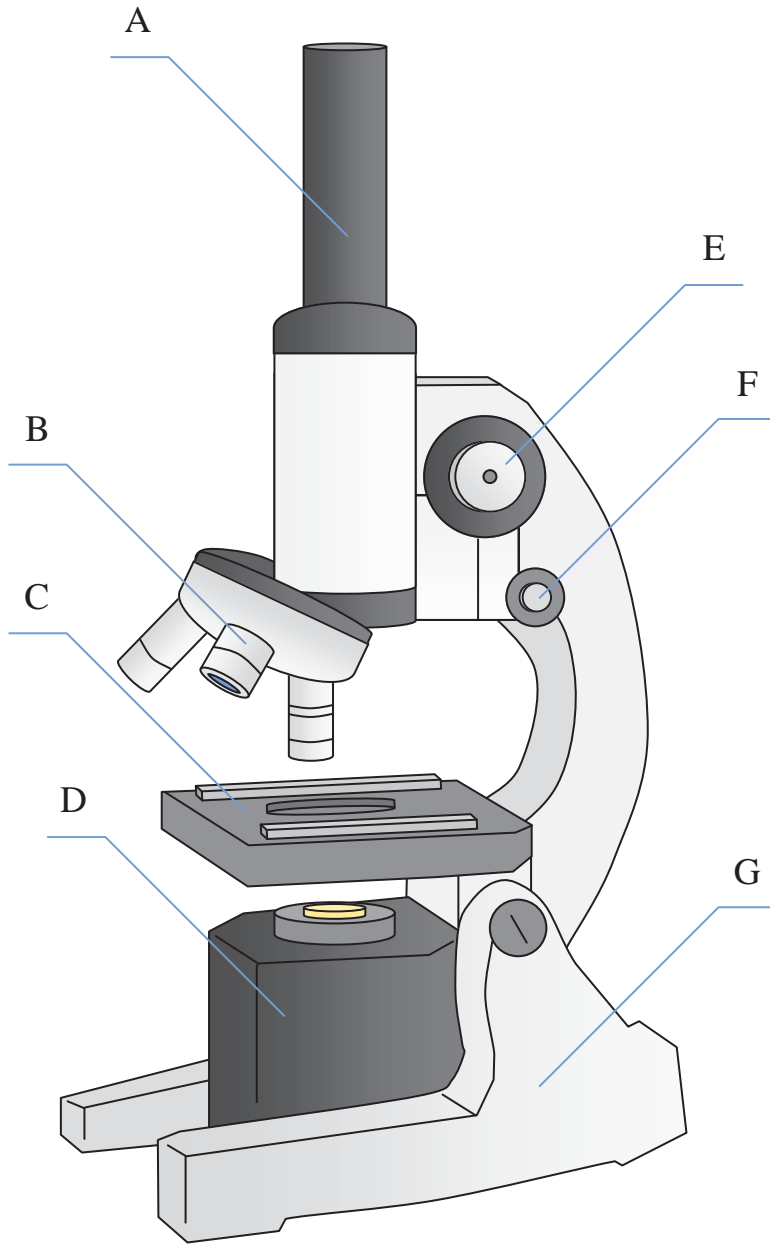
Answers

- 1. _____
- 2. _____
- 3. _____
- 4. _____
- 5. _____
- 6. _____
- 7. _____

- 1) Focus (Course) _____
- 2) Stage _____
- 3) Lense _____
- 4) Focus (Fine) _____
- 5) Eyepiece _____
- 6) Base _____
- 7) Illuminator _____



Determine which letter best matches each microscope piece.



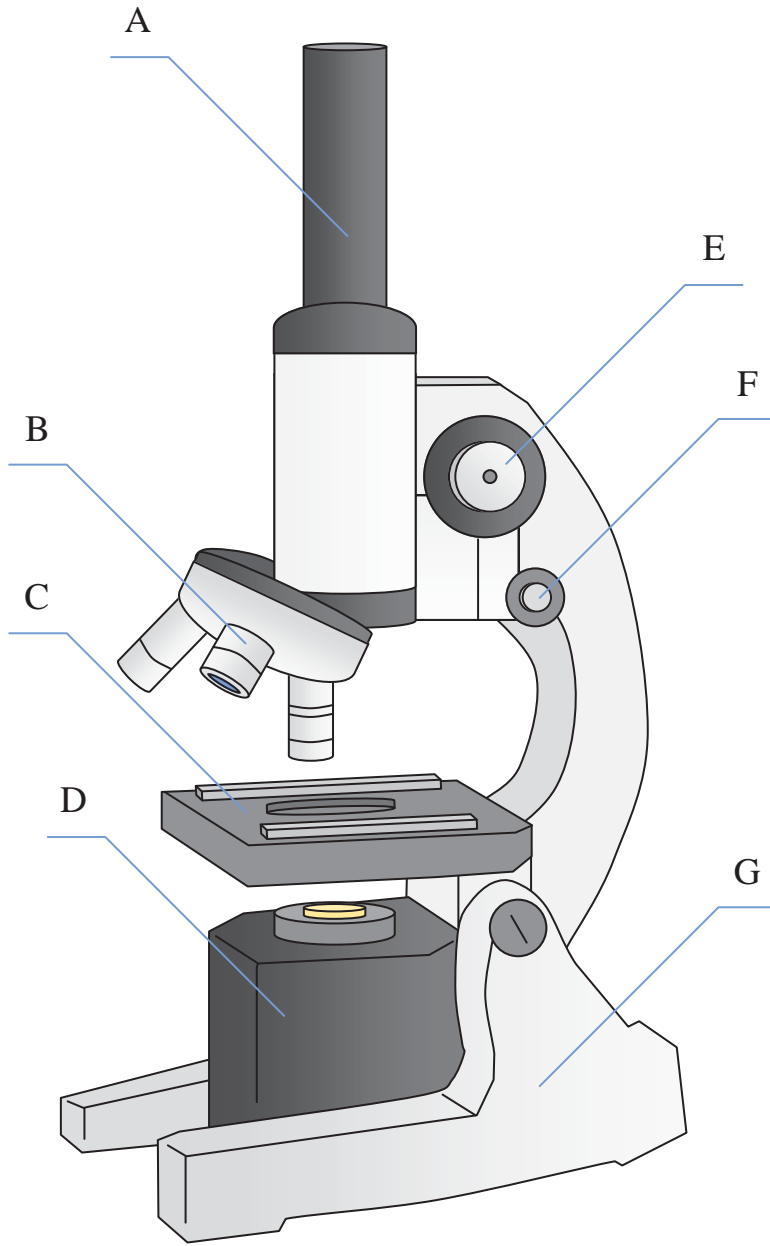
Answers

- 1. **E**
- 2. **C**
- 3. **B**
- 4. **F**
- 5. **A**
- 6. **G**
- 7. **D**

- 1) Focus (Course) _____
- 2) Stage _____
- 3) Lense _____
- 4) Focus (Fine) _____
- 5) Eyepiece _____
- 6) Base _____
- 7) Illuminator _____



Determine which letter best matches each microscope piece.



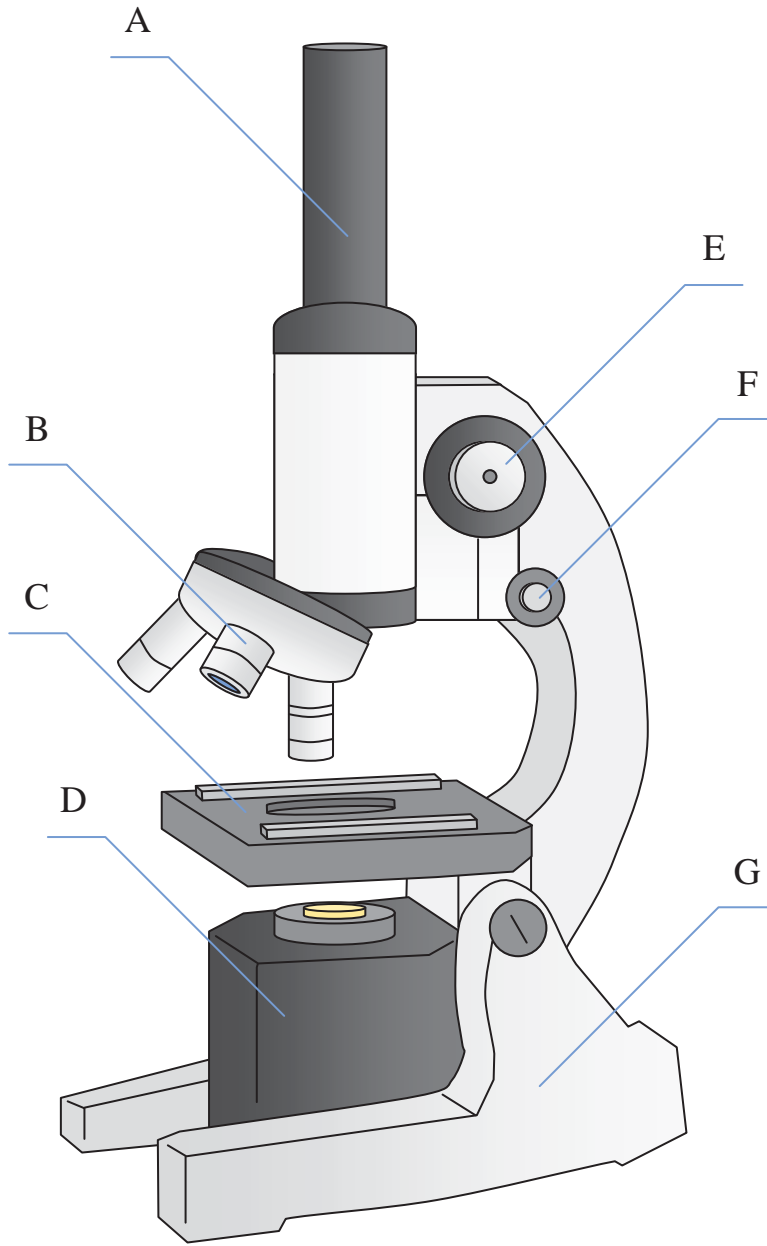
Answers

- 1. _____
- 2. _____
- 3. _____
- 4. _____
- 5. _____
- 6. _____
- 7. _____

- 1) Eyepiece _____
- 2) Focus (Fine) _____
- 3) Stage _____
- 4) Base _____
- 5) Lense _____
- 6) Illuminator _____
- 7) Focus (Course) _____



Determine which letter best matches each microscope piece.



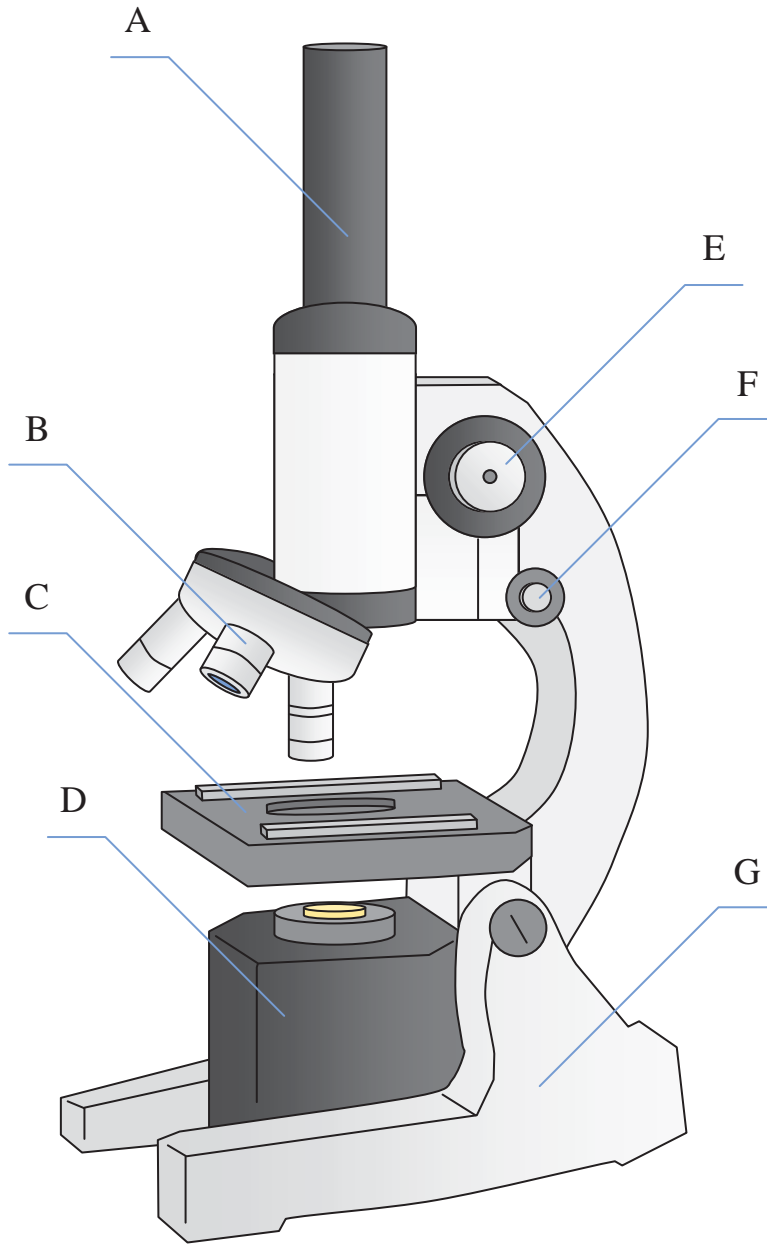
Answers

- 1. **A**
- 2. **F**
- 3. **C**
- 4. **G**
- 5. **B**
- 6. **D**
- 7. **E**

- 1) Eyepiece _____
- 2) Focus (Fine) _____
- 3) Stage _____
- 4) Base _____
- 5) Lense _____
- 6) Illuminator _____
- 7) Focus (Course) _____



Determine which letter best matches each microscope piece.



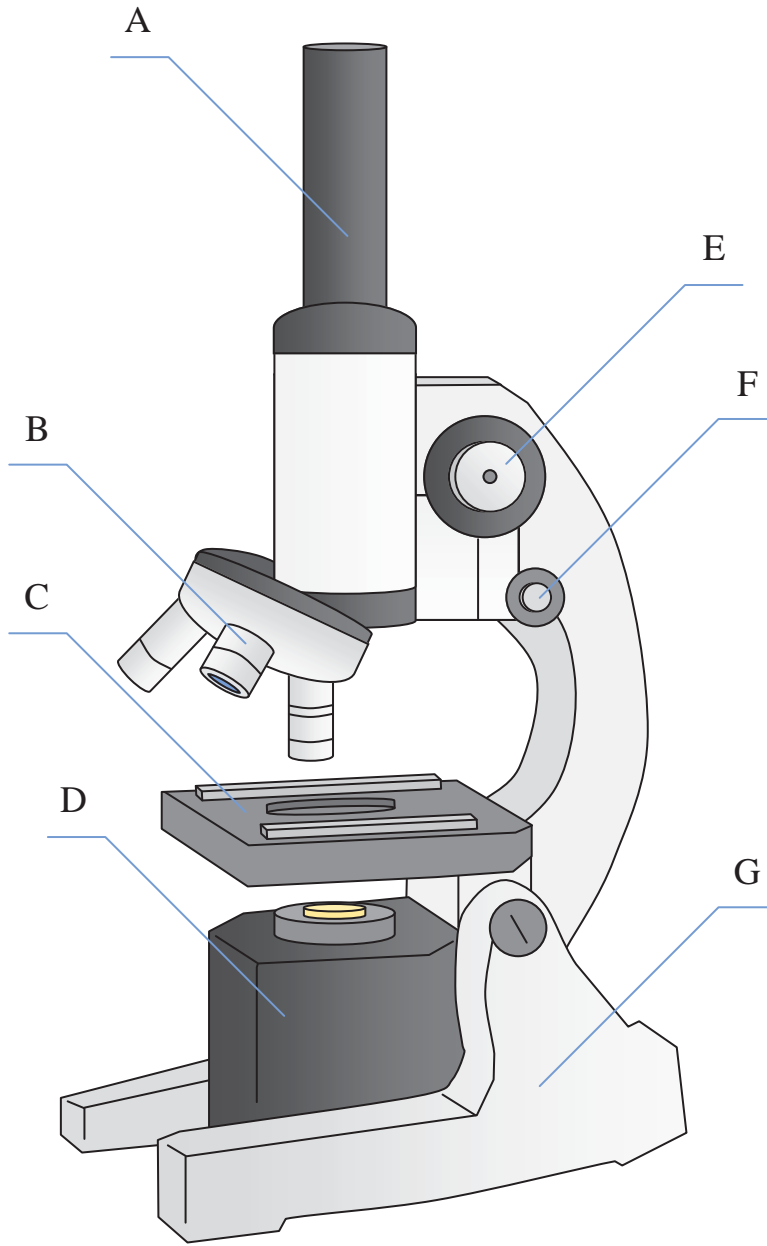
Answers

- 1. _____
- 2. _____
- 3. _____
- 4. _____
- 5. _____
- 6. _____
- 7. _____

- 1) Stage _____
- 2) Focus (Course) _____
- 3) Eyepiece _____
- 4) Base _____
- 5) Lense _____
- 6) Illuminator _____
- 7) Focus (Fine) _____



Determine which letter best matches each microscope piece.



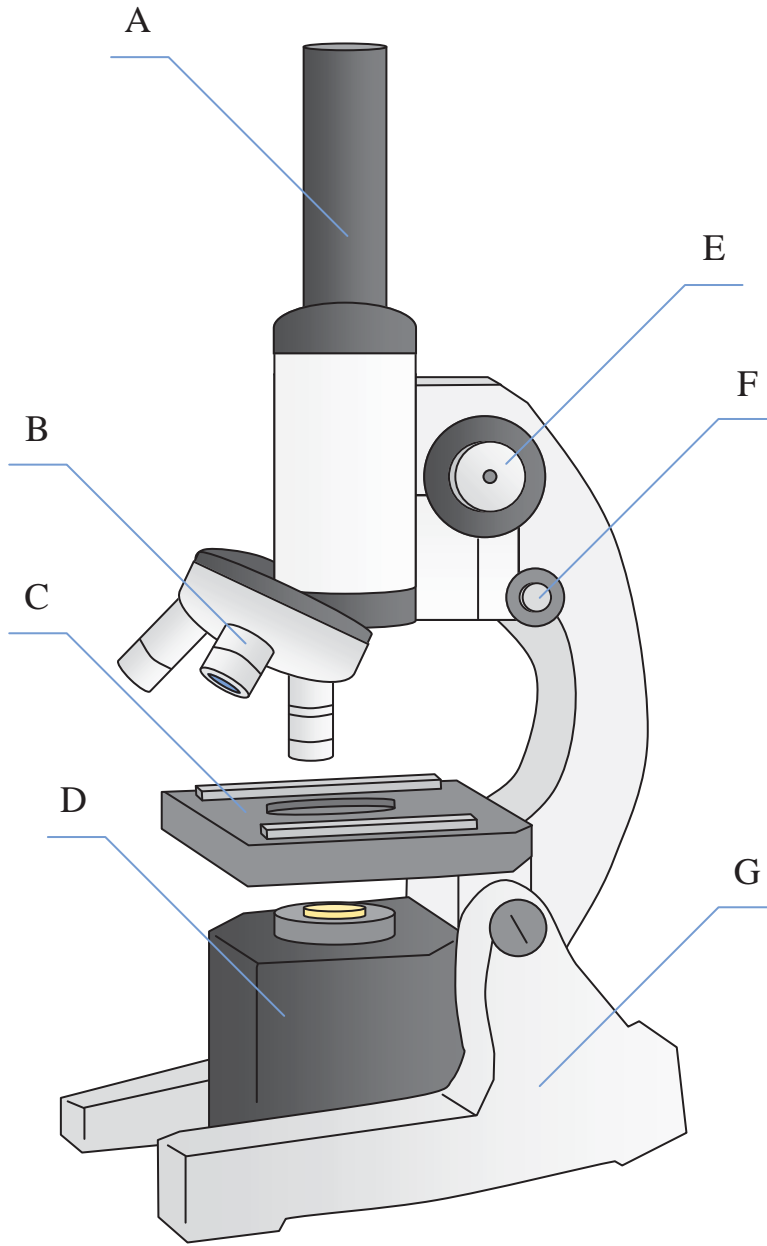
Answers

- 1. **C**
- 2. **E**
- 3. **A**
- 4. **G**
- 5. **B**
- 6. **D**
- 7. **F**

- 1) Stage _____
- 2) Focus (Course) _____
- 3) Eyepiece _____
- 4) Base _____
- 5) Lense _____
- 6) Illuminator _____
- 7) Focus (Fine) _____



Determine which letter best matches each microscope piece.



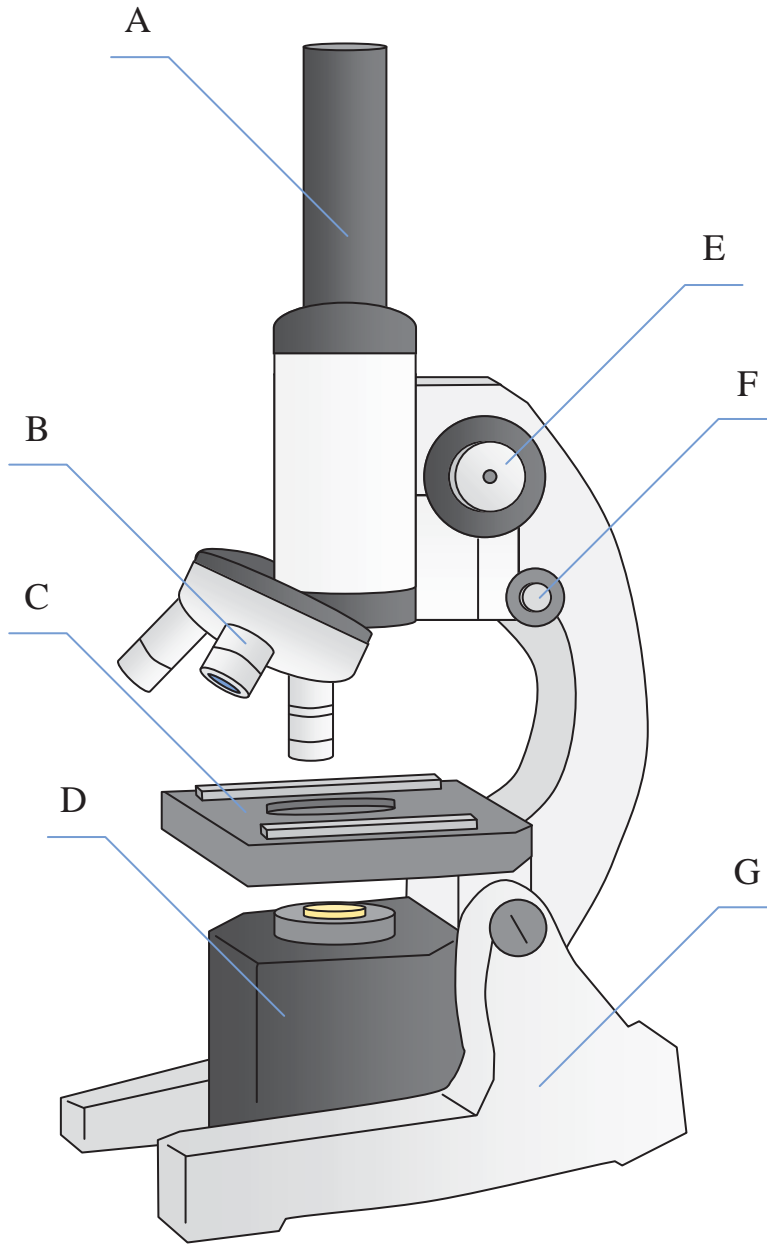
Answers

1. _____
2. _____
3. _____
4. _____
5. _____
6. _____
7. _____

- 1) Lense _____
- 2) Focus (Course) _____
- 3) Eyepiece _____
- 4) Illuminator _____
- 5) Stage _____
- 6) Focus (Fine) _____
- 7) Base _____



Determine which letter best matches each microscope piece.



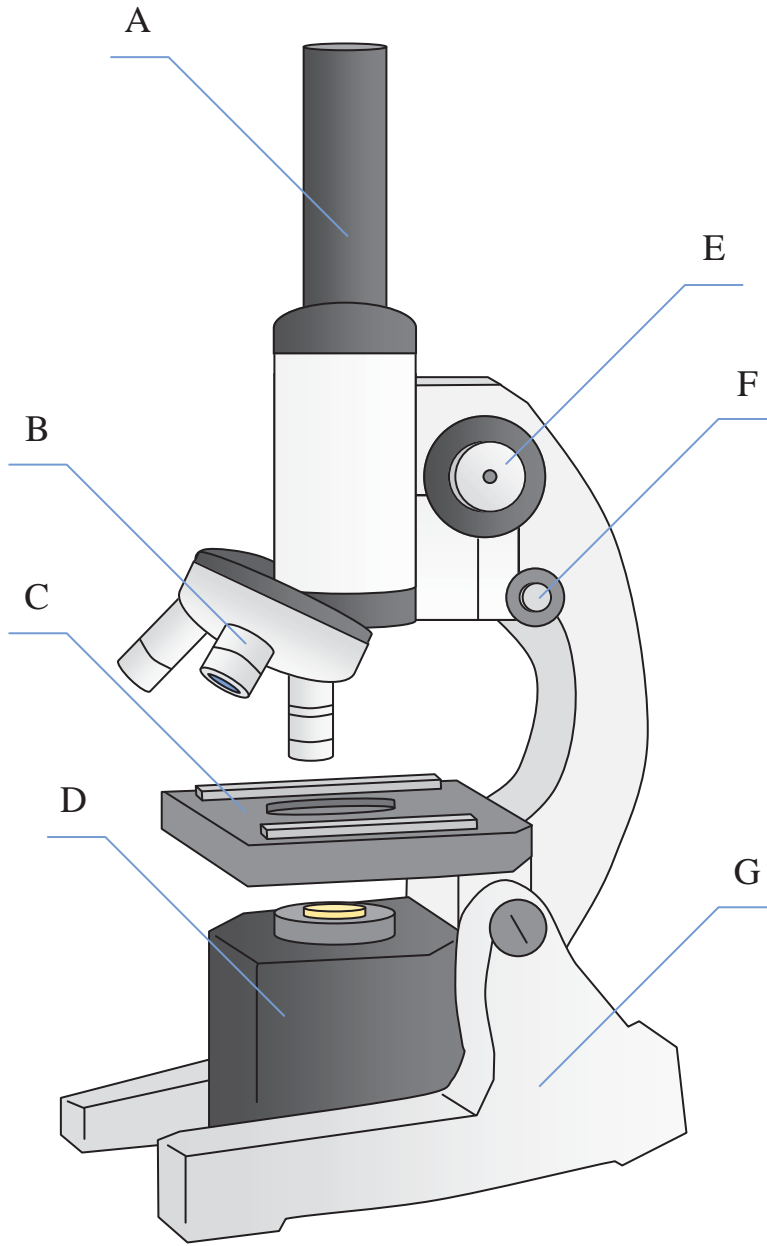
Answers

- 1. **B**
- 2. **E**
- 3. **A**
- 4. **D**
- 5. **C**
- 6. **F**
- 7. **G**

- 1) Lense _____
- 2) Focus (Course) _____
- 3) Eyepiece _____
- 4) Illuminator _____
- 5) Stage _____
- 6) Focus (Fine) _____
- 7) Base _____



Determine which letter best matches each microscope piece.



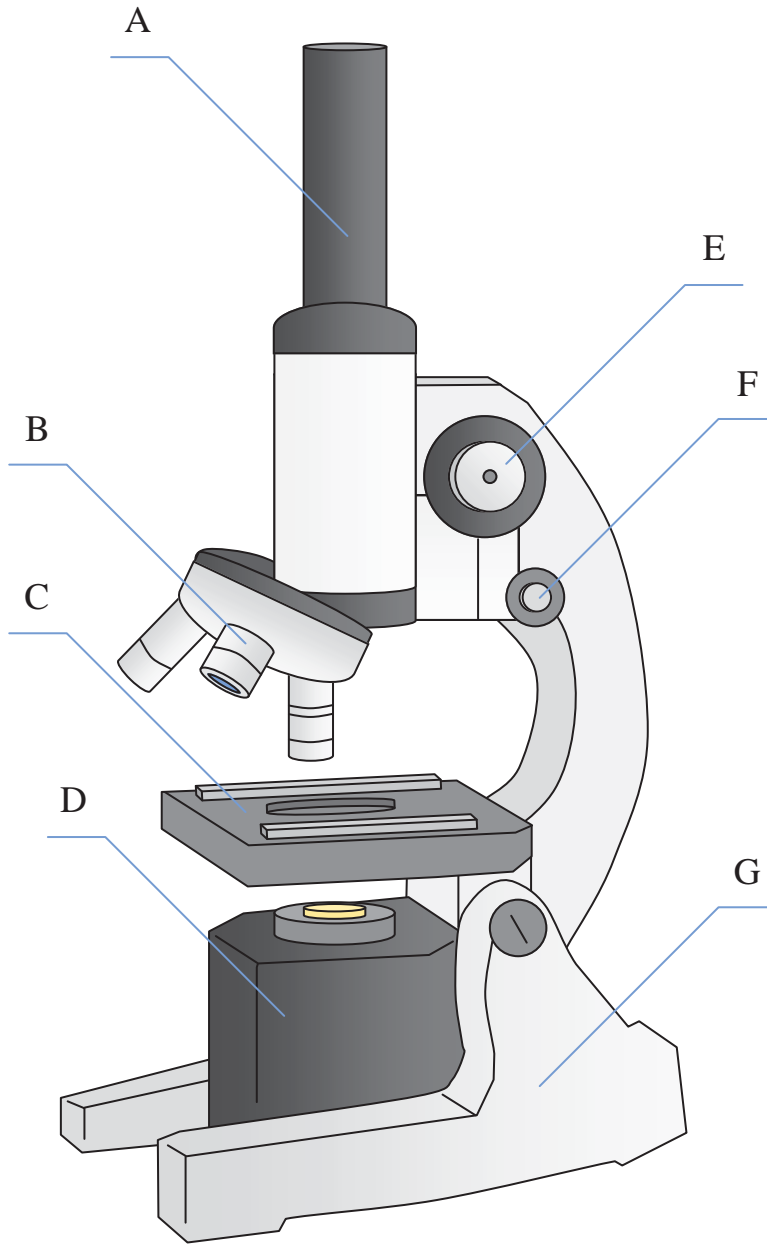
Answers

- 1. _____
- 2. _____
- 3. _____
- 4. _____
- 5. _____
- 6. _____
- 7. _____

- 1) Eyepiece _____
- 2) Base _____
- 3) Illuminator _____
- 4) Focus (Course) _____
- 5) Stage _____
- 6) Focus (Fine) _____
- 7) Lense _____



Determine which letter best matches each microscope piece.



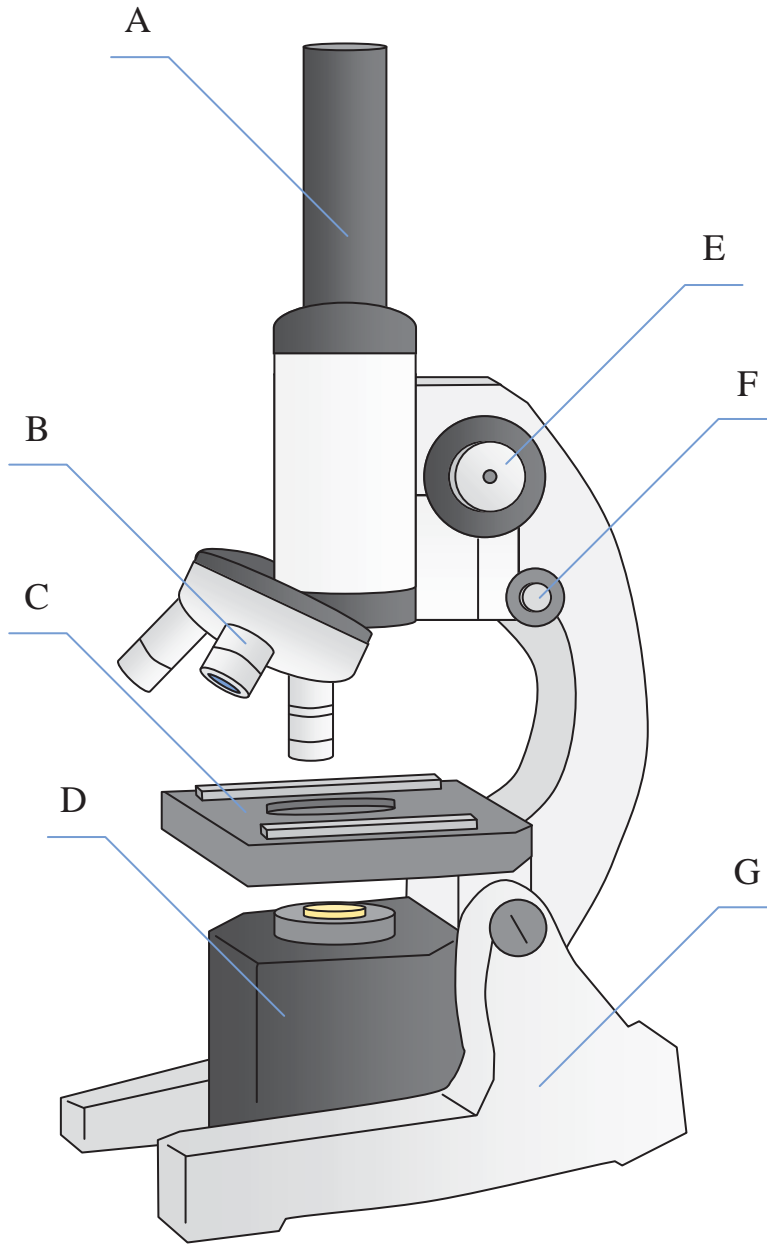
- 1) Eyepiece _____
- 2) Base _____
- 3) Illuminator _____
- 4) Focus (Course) _____
- 5) Stage _____
- 6) Focus (Fine) _____
- 7) Lense _____

Answers

- 1. **A**
- 2. **G**
- 3. **D**
- 4. **E**
- 5. **C**
- 6. **F**
- 7. **B**



Determine which letter best matches each microscope piece.



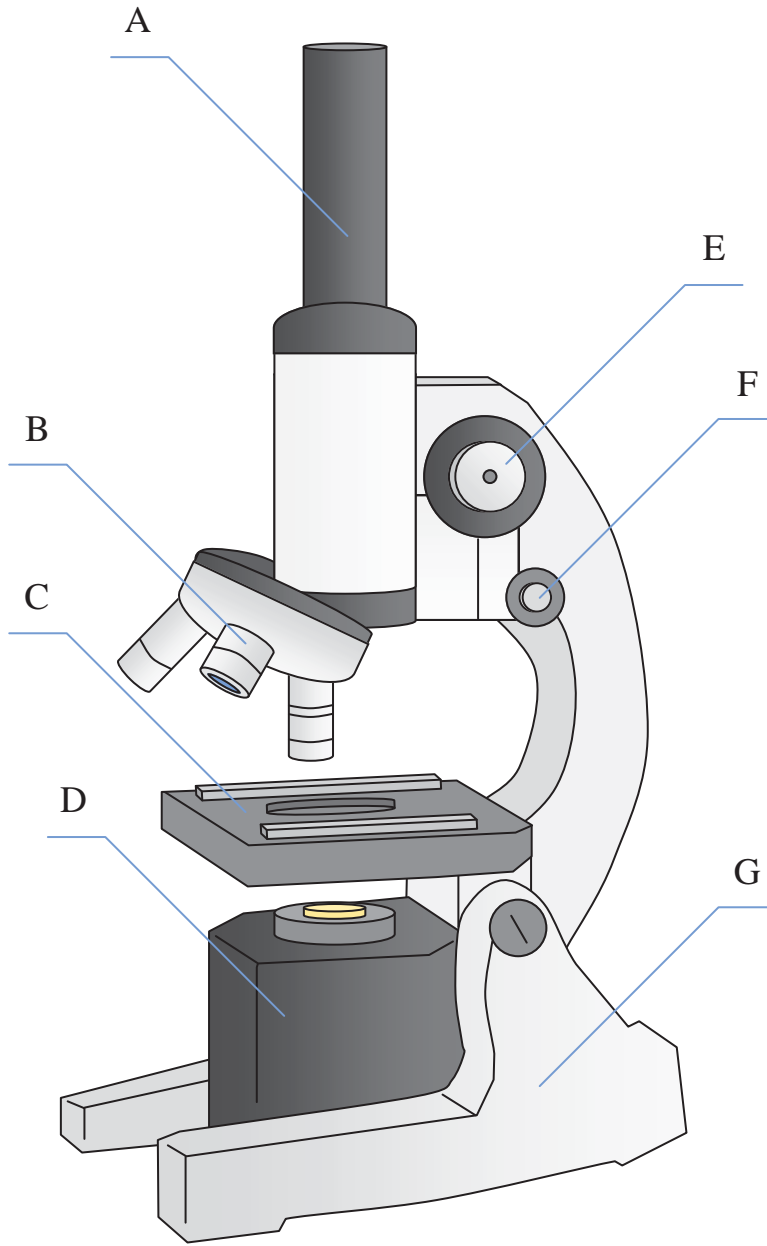
Answers

- 1. _____
- 2. _____
- 3. _____
- 4. _____
- 5. _____
- 6. _____
- 7. _____

- 1) Focus (Course) _____
- 2) Stage _____
- 3) Focus (Fine) _____
- 4) Base _____
- 5) Eyepiece _____
- 6) Illuminator _____
- 7) Lense _____



Determine which letter best matches each microscope piece.



- 1) Focus (Course) _____
- 2) Stage _____
- 3) Focus (Fine) _____
- 4) Base _____
- 5) Eyepiece _____
- 6) Illuminator _____
- 7) Lense _____

Answers

- 1. **E**
- 2. **C**
- 3. **F**
- 4. **G**
- 5. **A**
- 6. **D**
- 7. **B**