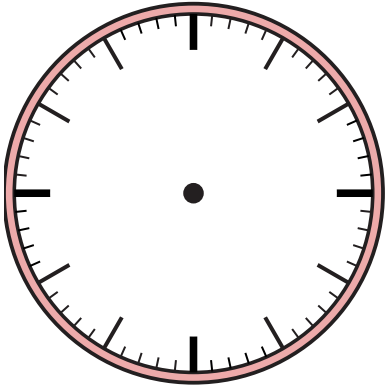




Draw the hour and minute hand on the clock so it represents the time shown.

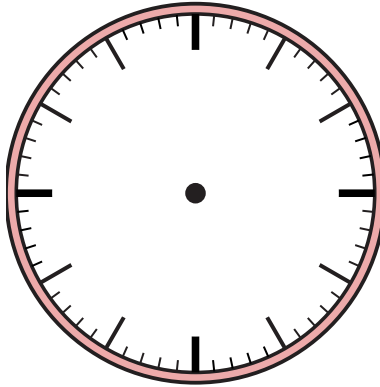
1)

11:55



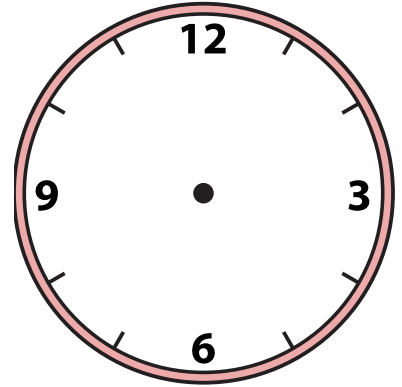
2)

7:15



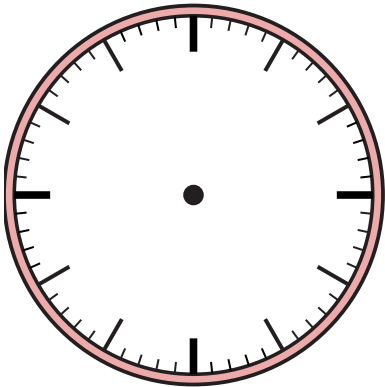
3)

8:15



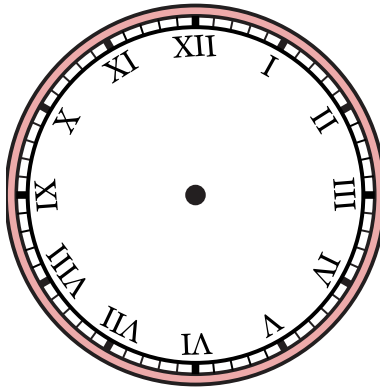
4)

10:17



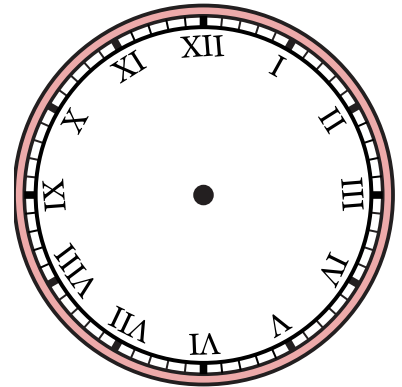
5)

8:29



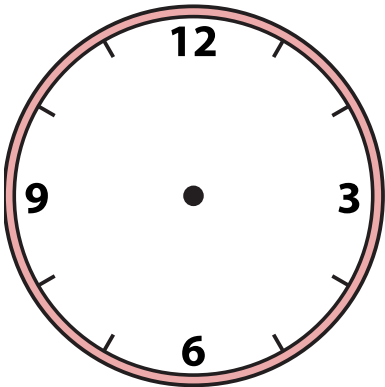
6)

2:09



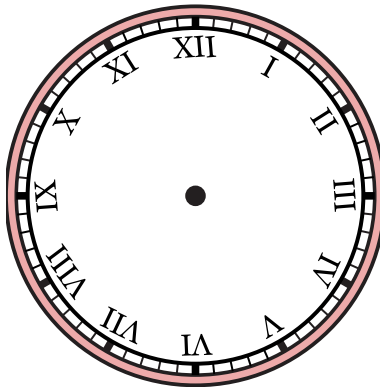
7)

12:43



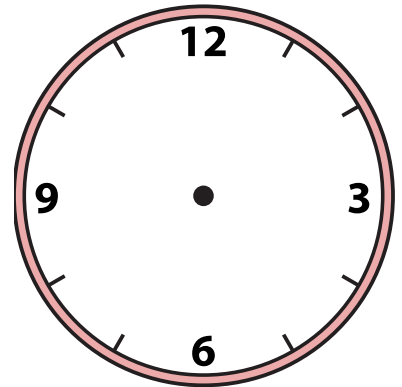
8)

4:16



9)

12:50



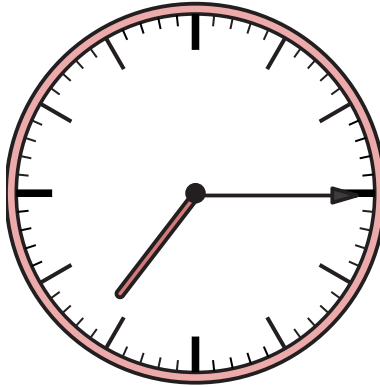


Draw the hour and minute hand on the clock so it represents the time shown.

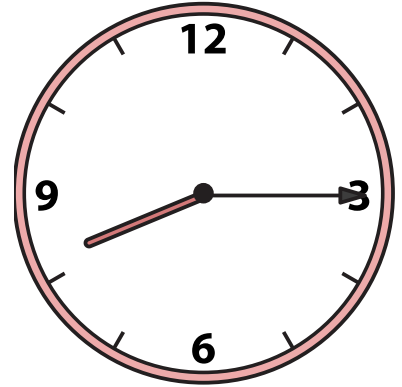
1) 11:55



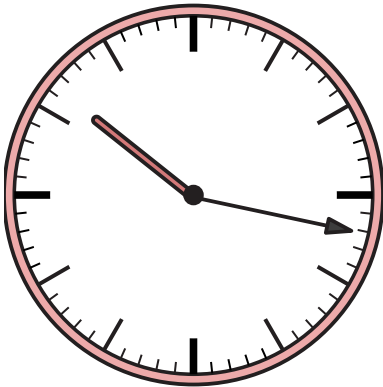
2) 7:15



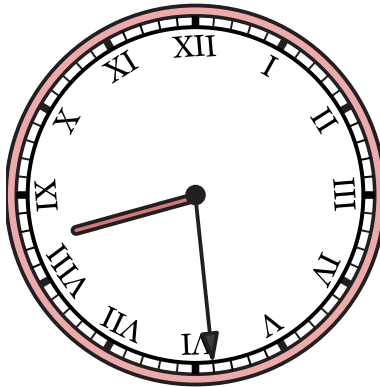
3) 8:15



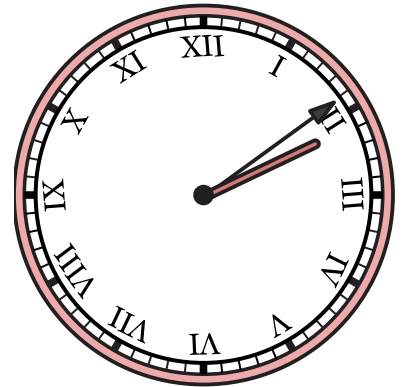
4) 10:17



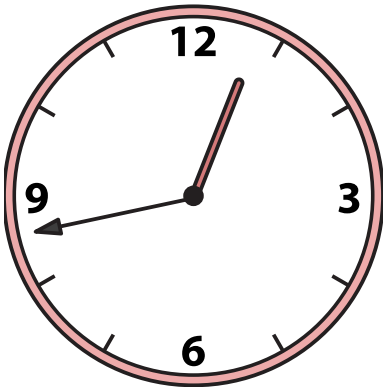
5) 8:29



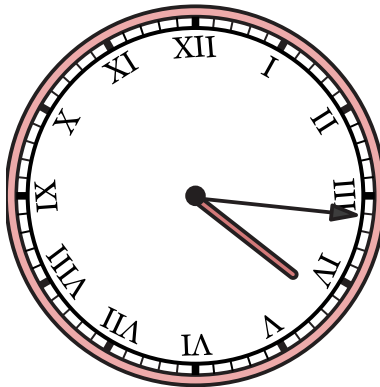
6) 2:09



7) 12:43



8) 4:16



9) 12:50

