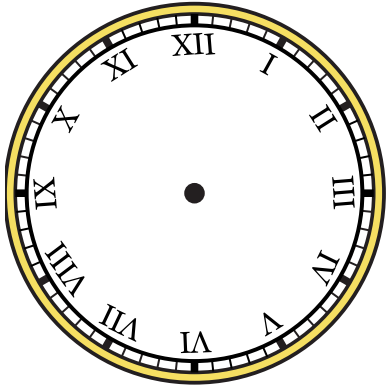


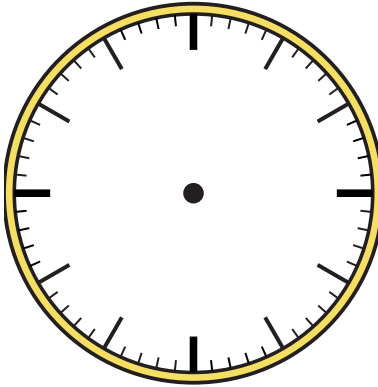


Draw the hour and minute hand on the clock so it represents the time shown.

1) 5:30



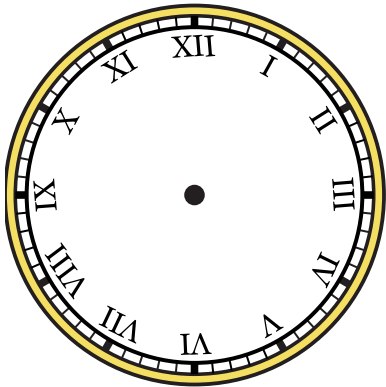
2) 7:00



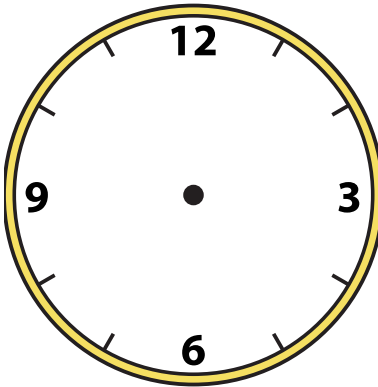
3) 8:45



4) 3:00



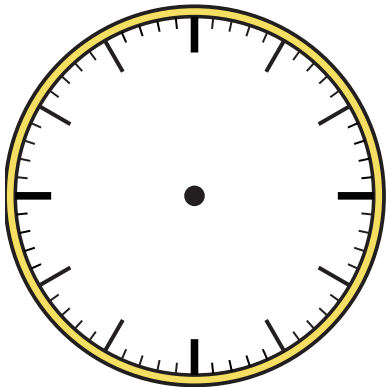
5) 2:15



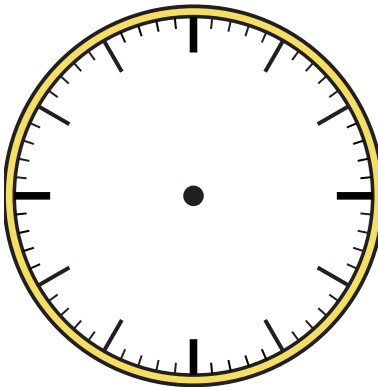
6) 12:30



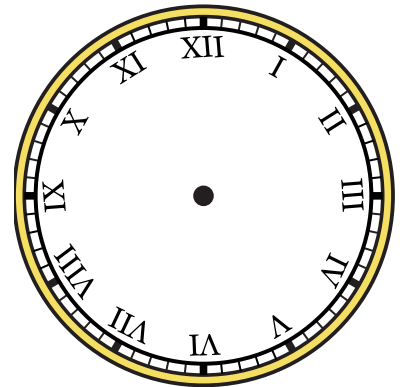
7) 2:45



8) 4:15



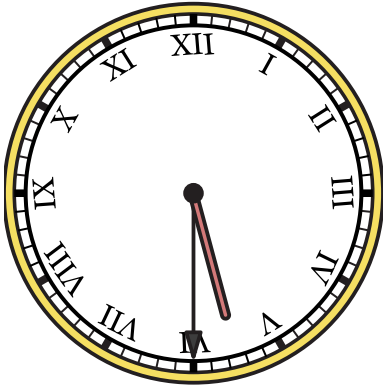
9) 9:00





Draw the hour and minute hand on the clock so it represents the time shown.

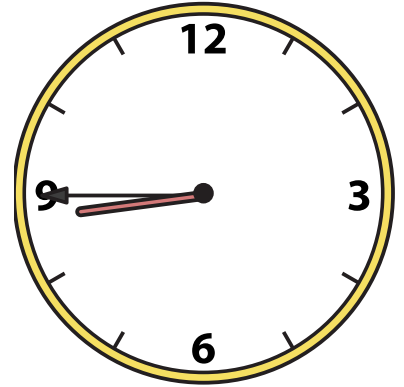
1) 5:30



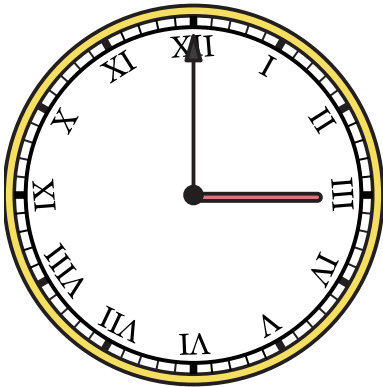
2) 7:00



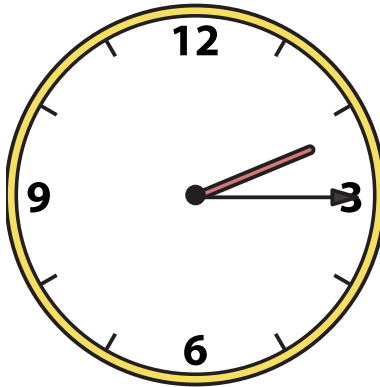
3) 8:45



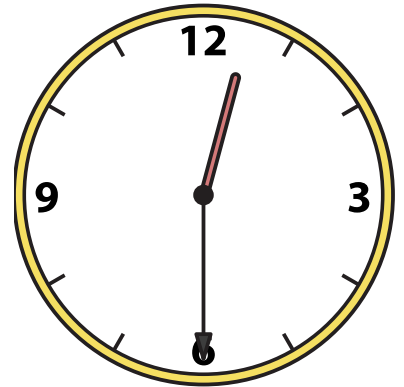
4) 3:00



5) 2:15



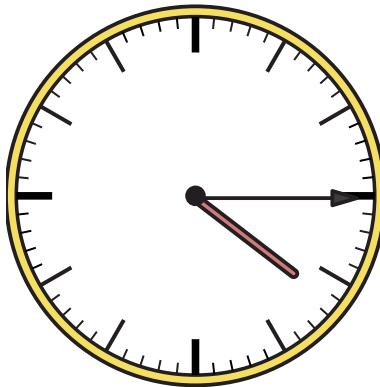
6) 12:30



7) 2:45



8) 4:15



9) 9:00

