



Draw the hour and minute hand on the clock so it represents the time shown.

1) 1:30



2) 8:00



3) 1:45



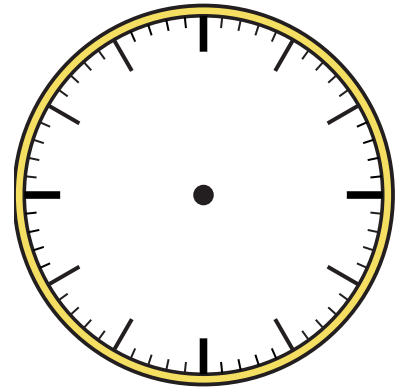
4) 12:30



5) 4:45



6) 10:30



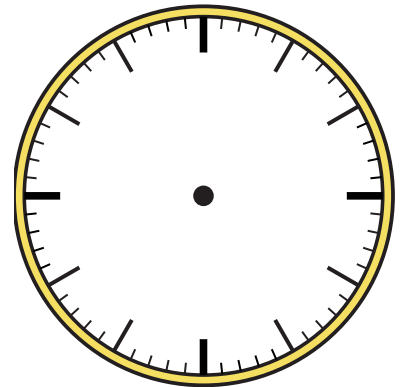
7) 6:00



8) 2:15



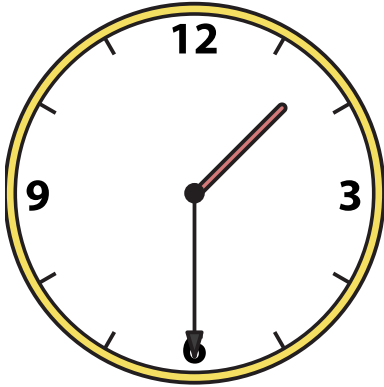
9) 4:00





Draw the hour and minute hand on the clock so it represents the time shown.

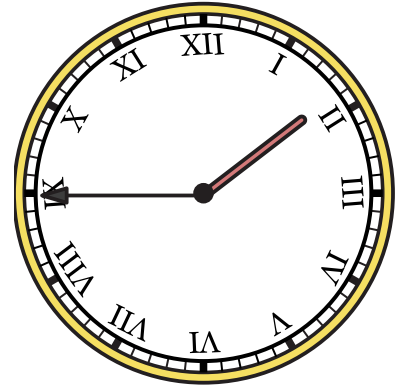
1) 1:30



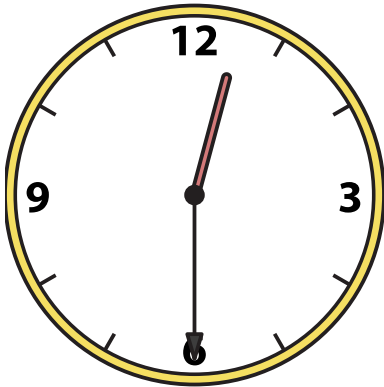
2) 8:00



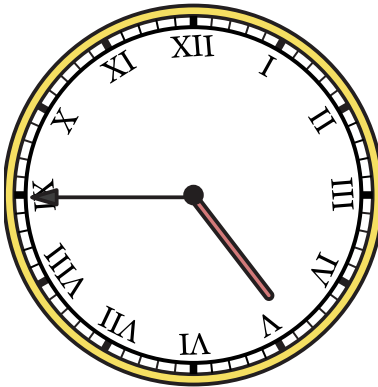
3) 1:45



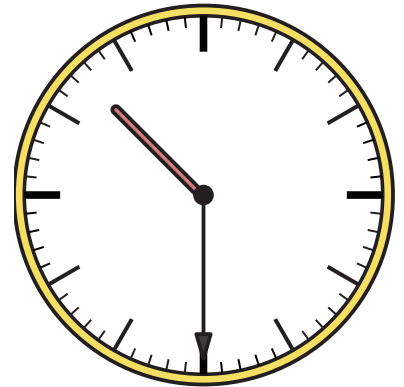
4) 12:30



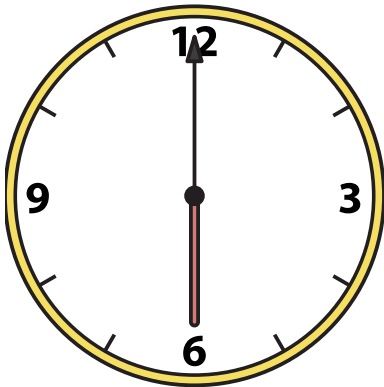
5) 4:45



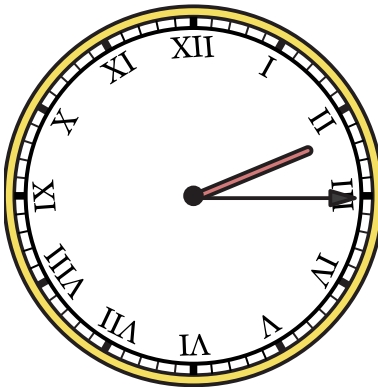
6) 10:30



7) 6:00



8) 2:15



9) 4:00

